



CITY OF
SOUTH BEND, INDIANA

LEEPER PARK

Project Information Meeting

12.04.2018



MEETING AGENDA

*Project Information
Meeting*

12.04.2018

AGENDA

The format of the meeting features a formal presentation with an informal open house session following the presentation. The open house session will provide an opportunity to view project displays and to interact with the project team.

The purpose of this meeting is to obtain your views regarding the developing plans and proposed park features.

- Project background
- Park Plans
- Timeline and next steps
- Open house discussion



PROJECT BACKGROUND

*Project Information
Meeting*

12.04.2018

PROJECT BACKGROUND



CONCEPT PLAN

*Project Information
Meeting*

12.04.2018

BRIEF HISTORY

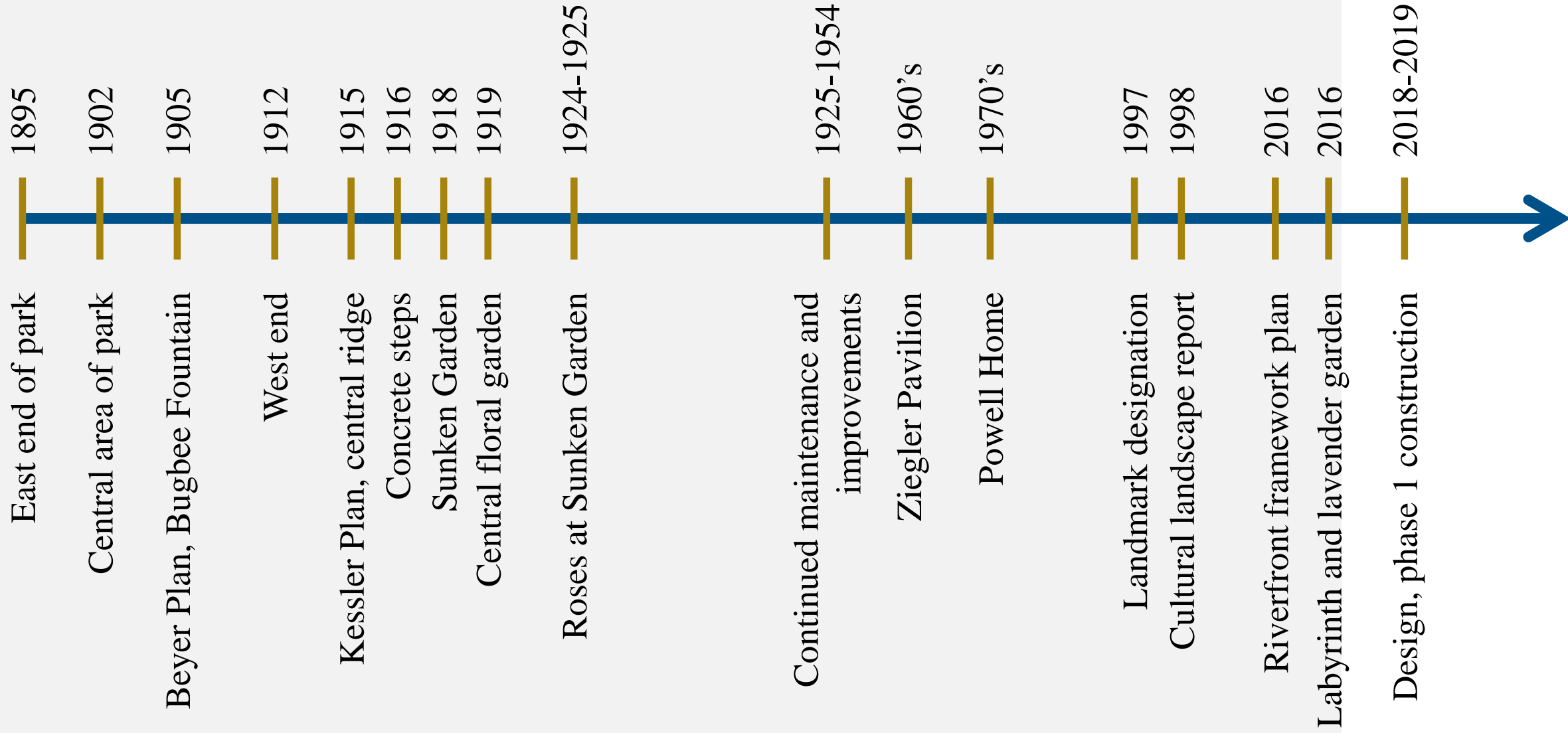
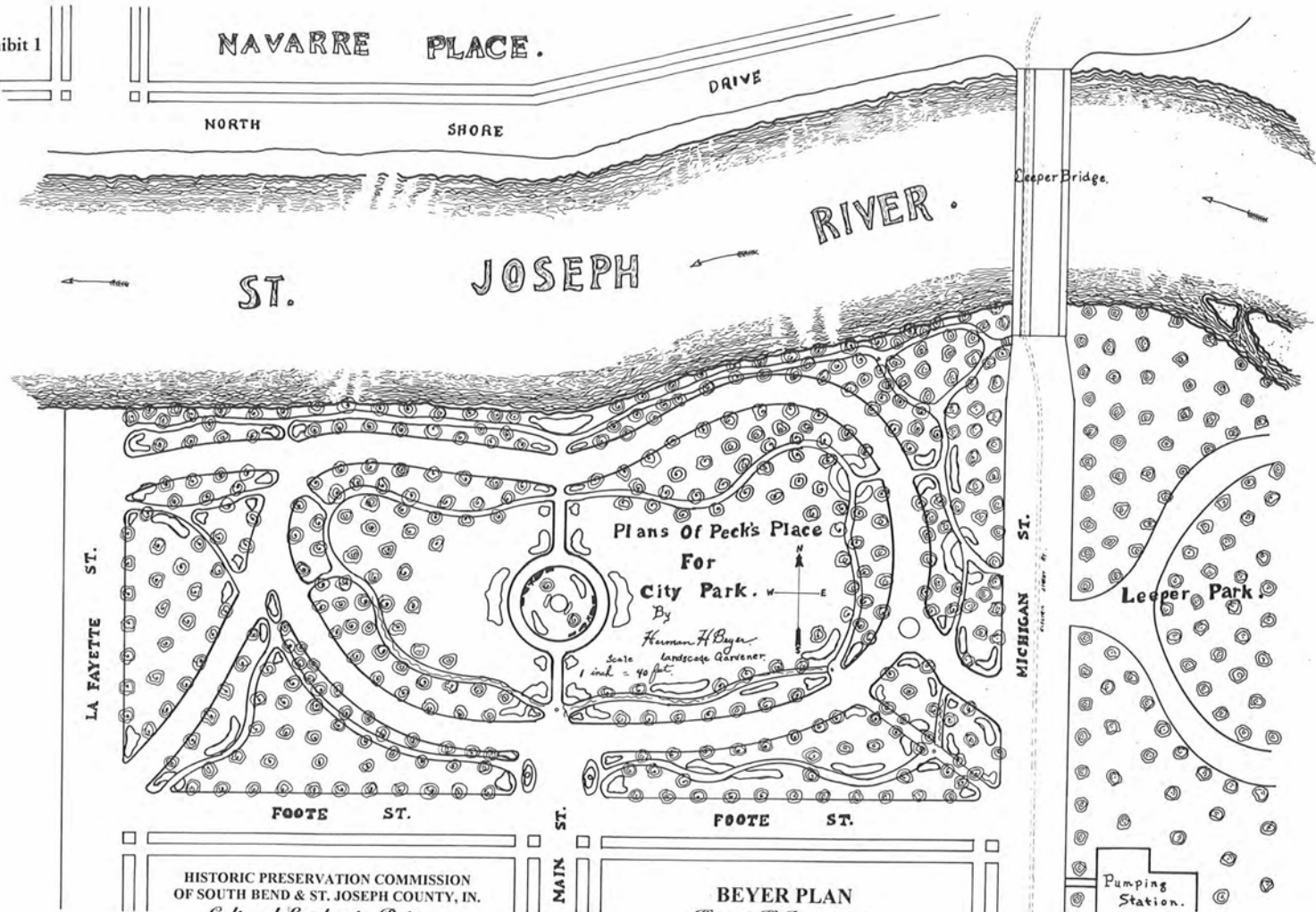


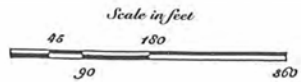


Exhibit 1

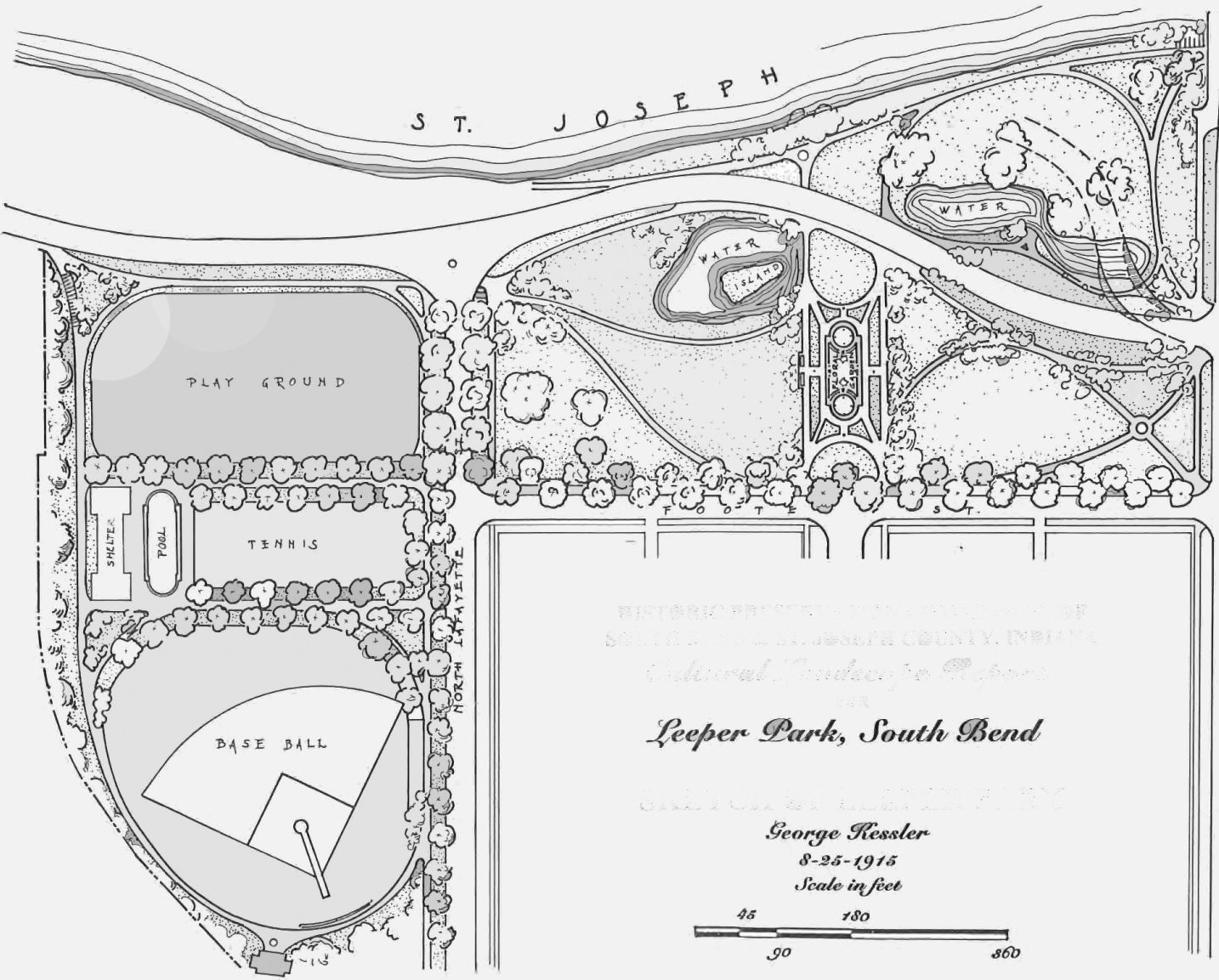


HISTORIC PRESERVATION COMMISSION
OF SOUTH BEND & ST. JOSEPH COUNTY, IN.
Cultural Landscape Report
FOR
Leeper Park, South Bend

BEYER PLAN
Herman H. Beyer, 1905
Prepared by
The Westerly Group, Inc.
FARMERSBURG, INDIANA



Beyer Plan



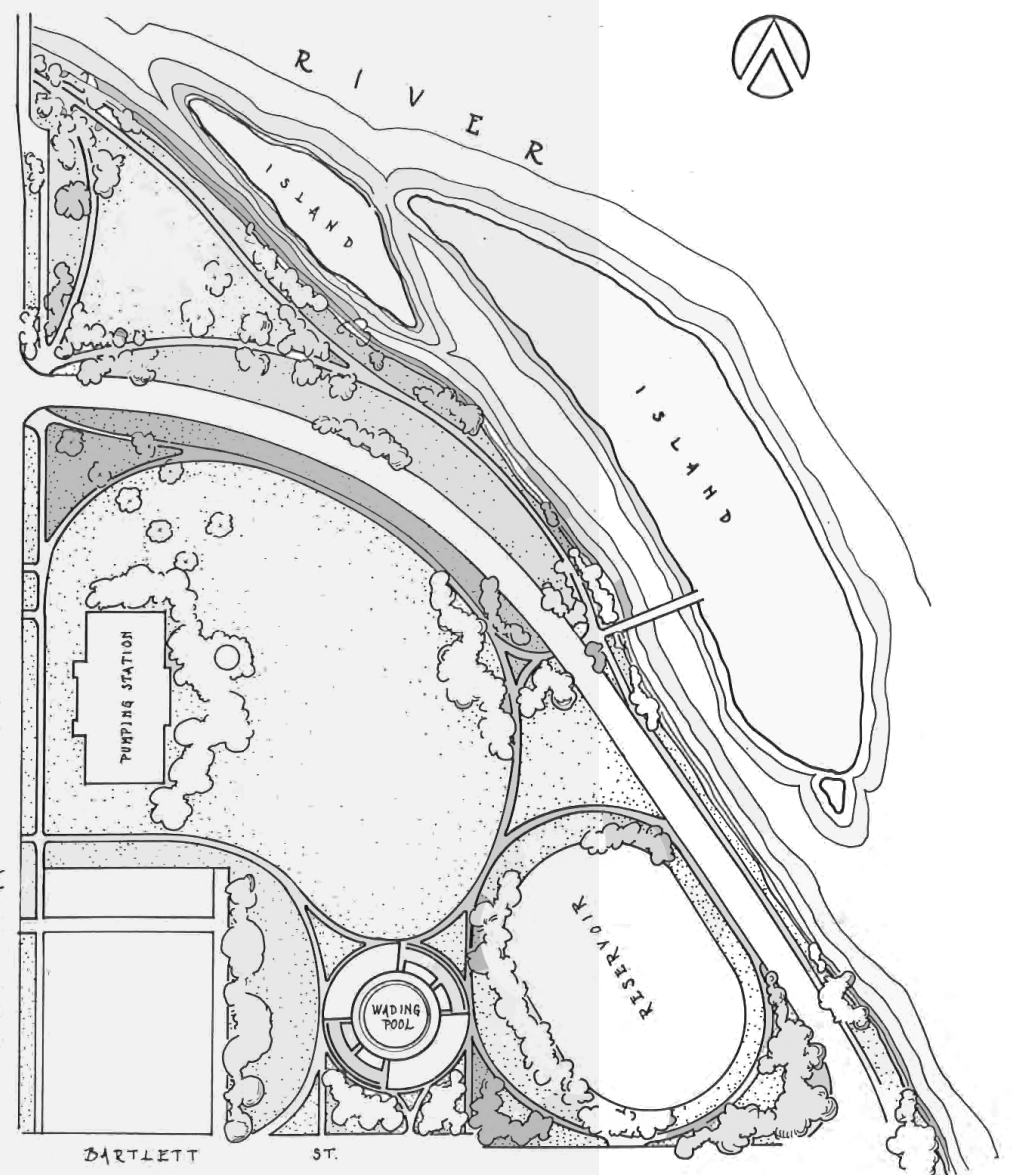
HISTORIC PRESERVE OF THE CITY OF SOUTH BEND, ST. JOSEPH COUNTY, INDIANA
Cultural Landmarks Program

Leeper Park, South Bend

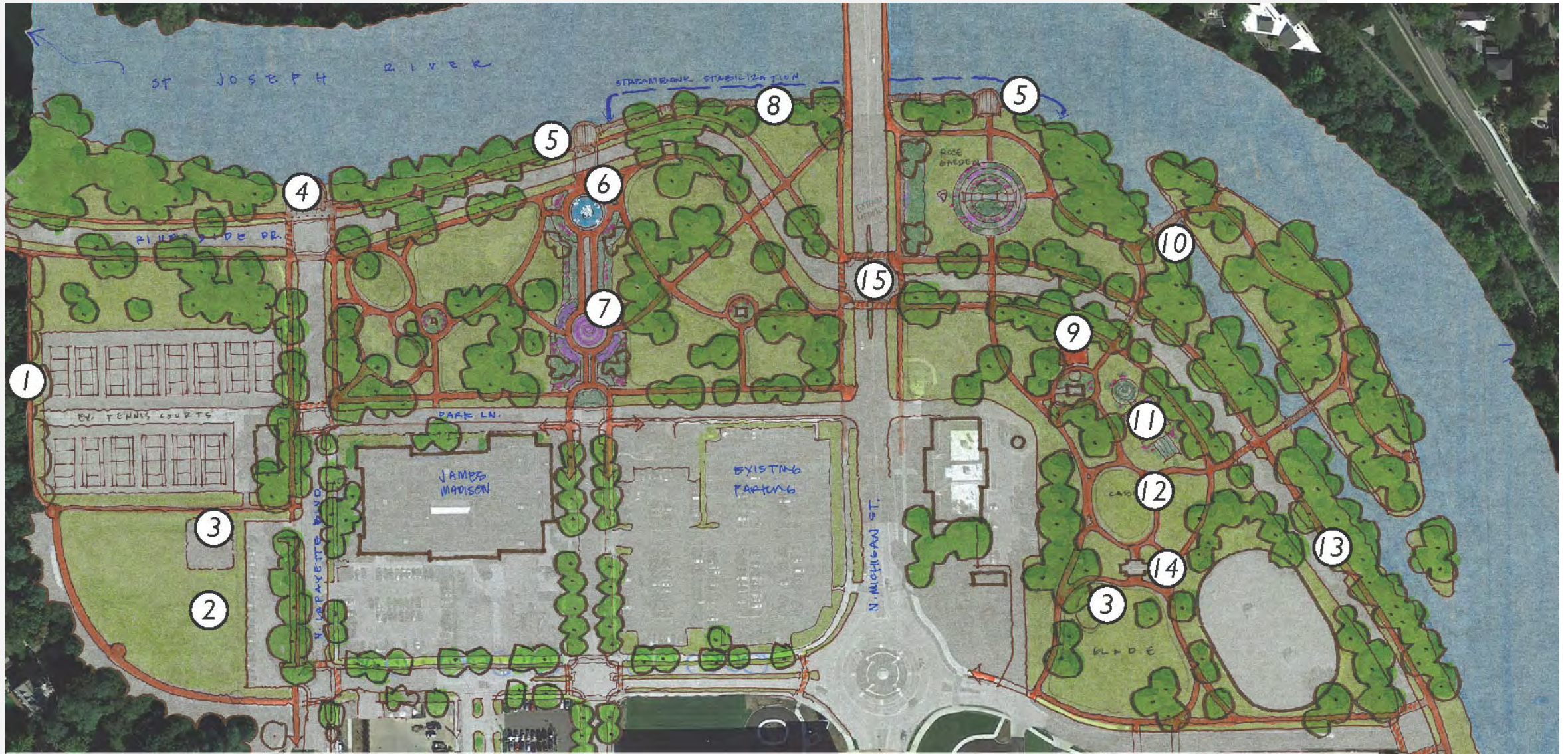
George Kessler
 8-25-1915
 Scale in feet



PREPARED BY
The Wastonsky Group, Inc.



Kessler Plan



2016 Framework



Leeper Park

CULTURAL LANDSCAPE REPORT

Prepared by
The Westerly Group, Inc.

For:
The Historic Preservation Commission
of South Bend & St. Joseph County

May, 1998

APP-1204c 11/20 98

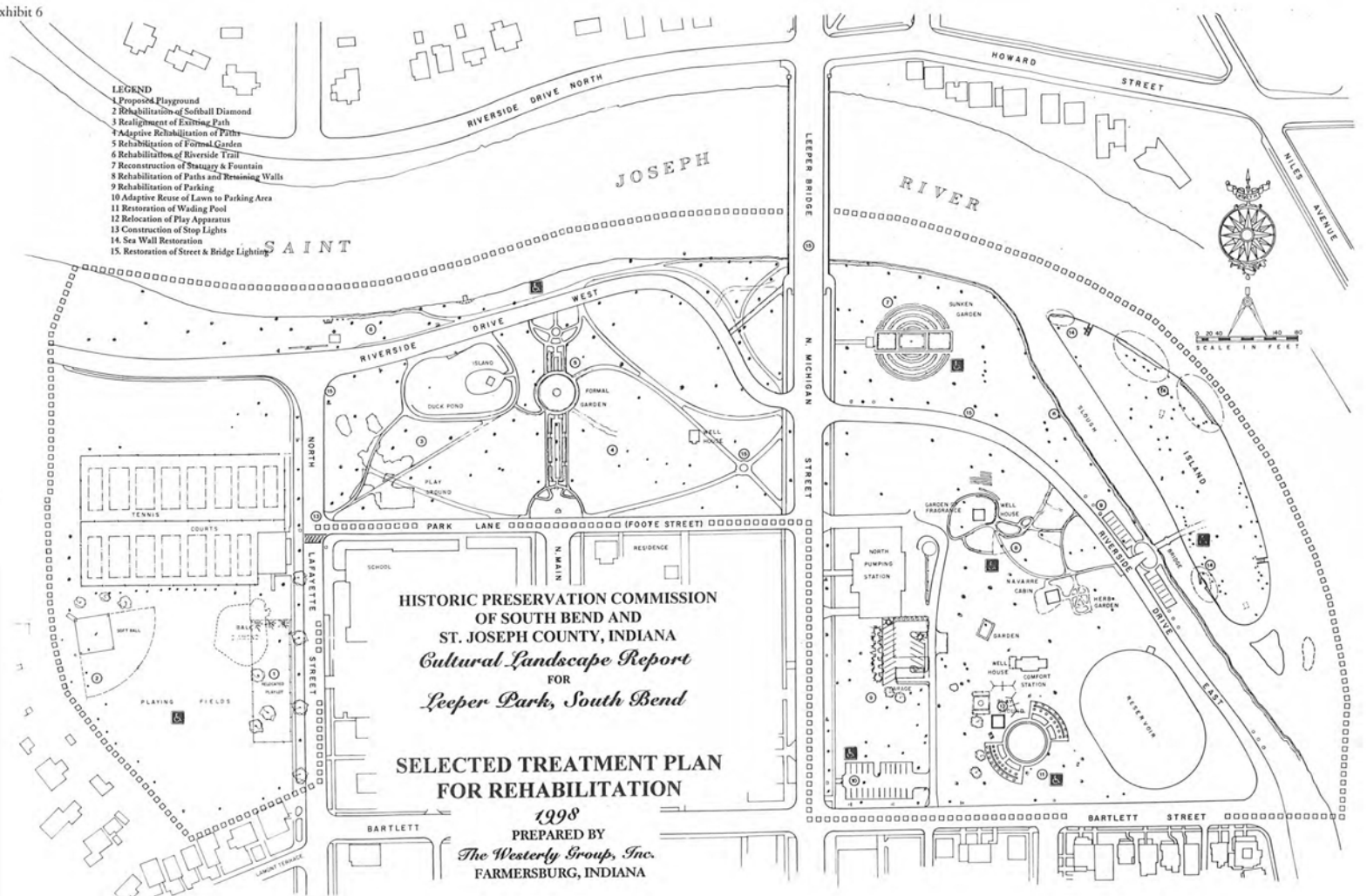
1001 RIVERSIDE DRIVE 219 288 4314

9.0 LANDSCAPES - STANDARDS AND CRITERIA FOR LEEPER PARK

9.1 Introduction

- In these guidelines the verb *shall* indicates a recommended course of action; the verb *shall* indicates those actions which are specifically required to preserve and protect significant architectural elements.
- The intent of these standards and criteria is to preserve the overall character and appearance of Leeper Park including its spatial organization, topography, vegetation, circulation and features.
- The standards and criteria acknowledge that there will be changes to the landscape and are intended to make the changes sensitive to the historic character of the landscape.
- Each property will be separately studied to determine if a later addition and/or alteration can, or should, be removed.
- Since it is not possible to provide one general guideline, the following factors that will be considered in determining whether a later addition and/or alteration can, or should, be removed include:
 - Compatibility with the original property's integrity in scale, materials and character.
 - Historic association with the property.
 - Quality in design and execution of the addition/alteration.
 - Functional usefulness.
- Recreational facilities which exist should be allowed to remain as long as they serve substantial community functions. In some cases these features can be redesigned to be more compatible with the overall landscape.
- Additions to existing recreational facilities shall not be allowed unless such additions make the facilities more compatible with the overall landscape.
- The development of additional facilities for active recreation or single purpose uses for limited user groups shall not be allowed.
- Proposals for special activities and events which cause significant impacts or require permanent or even semi-permanent (seasonal) structures or facilities shall not be

Exhibit 6



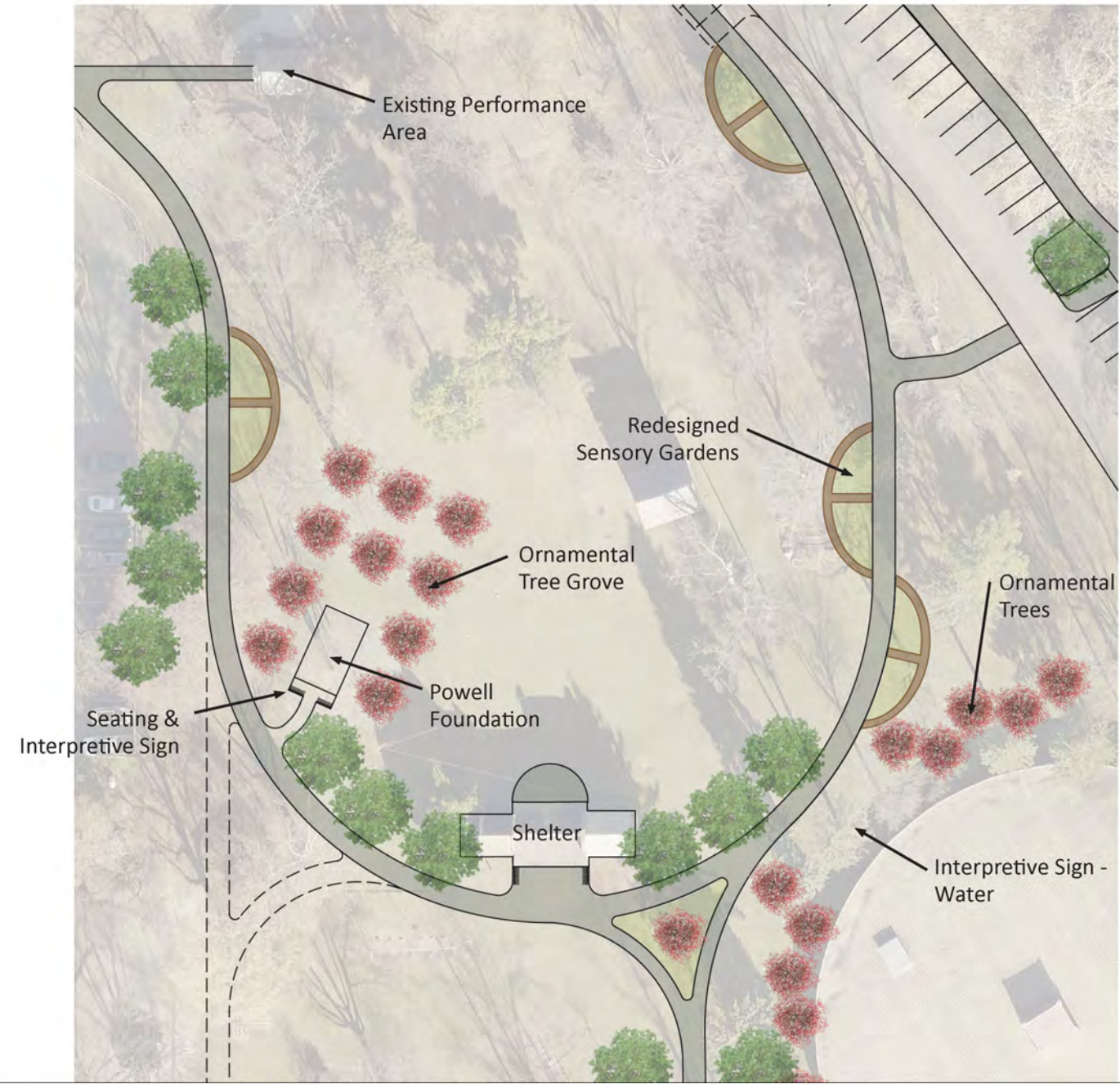


Overall Plan



- Simple path network
- Improve access to existing features
- Strengthen connection to neighborhood
- Riverwalk will extend south to proposed bridge at Marion Street

East End



- Repurpose comfort station as shelter
- Elevate the Powell Foundation experience
- Redesign sensory gardens along path while maintaining character, provide ADA access



East End



Proposed Phase 1



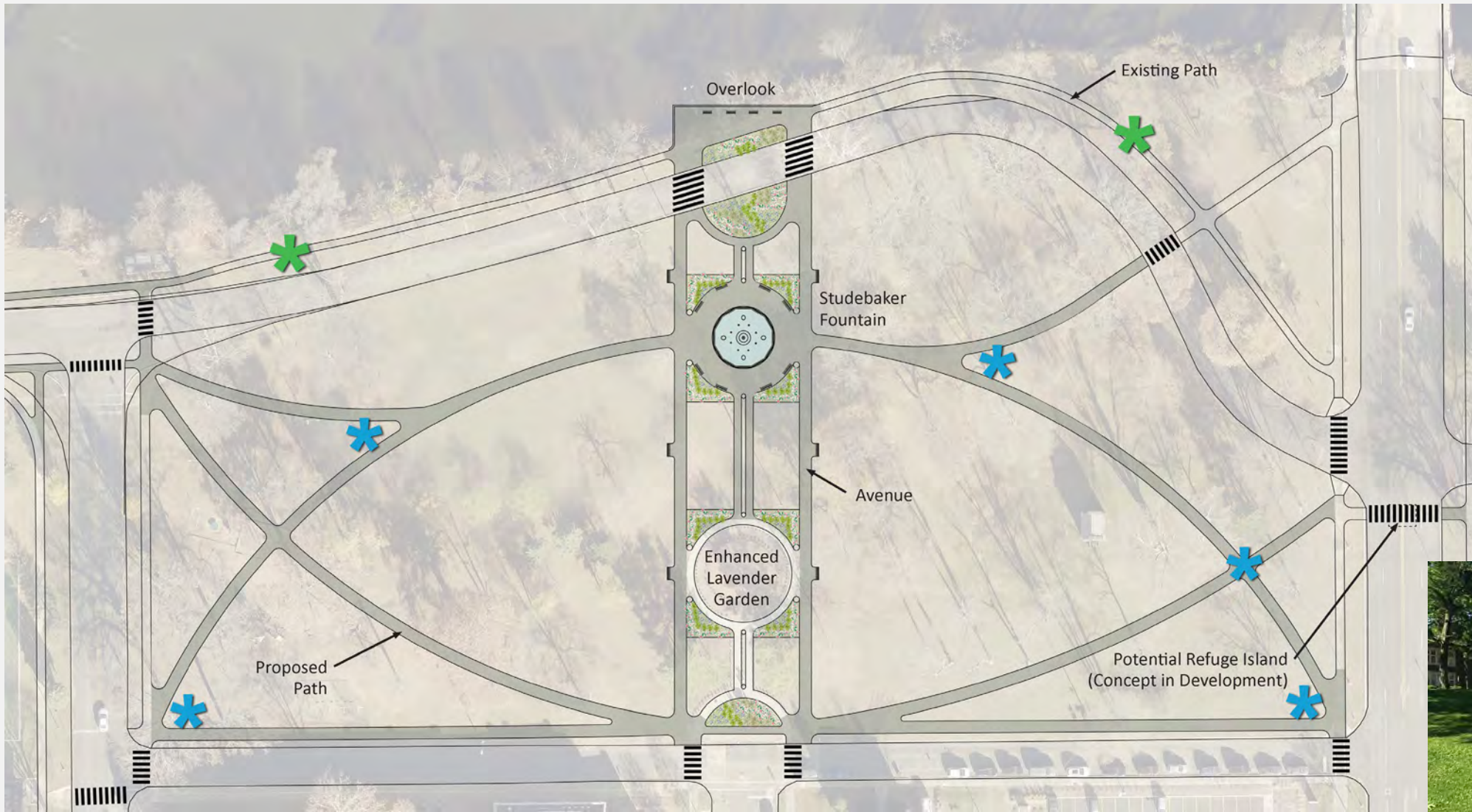
- Relocate playground south of tennis courts
 - Closer to parking, restrooms
- New paths along playground and north to Riverside Drive



- Pods of age-related play equipment
- Low fence between play and parking
- Poured-in-place safety surface
- Multipurpose field
- Use of sail structures and trees for shade
- Seating



West End

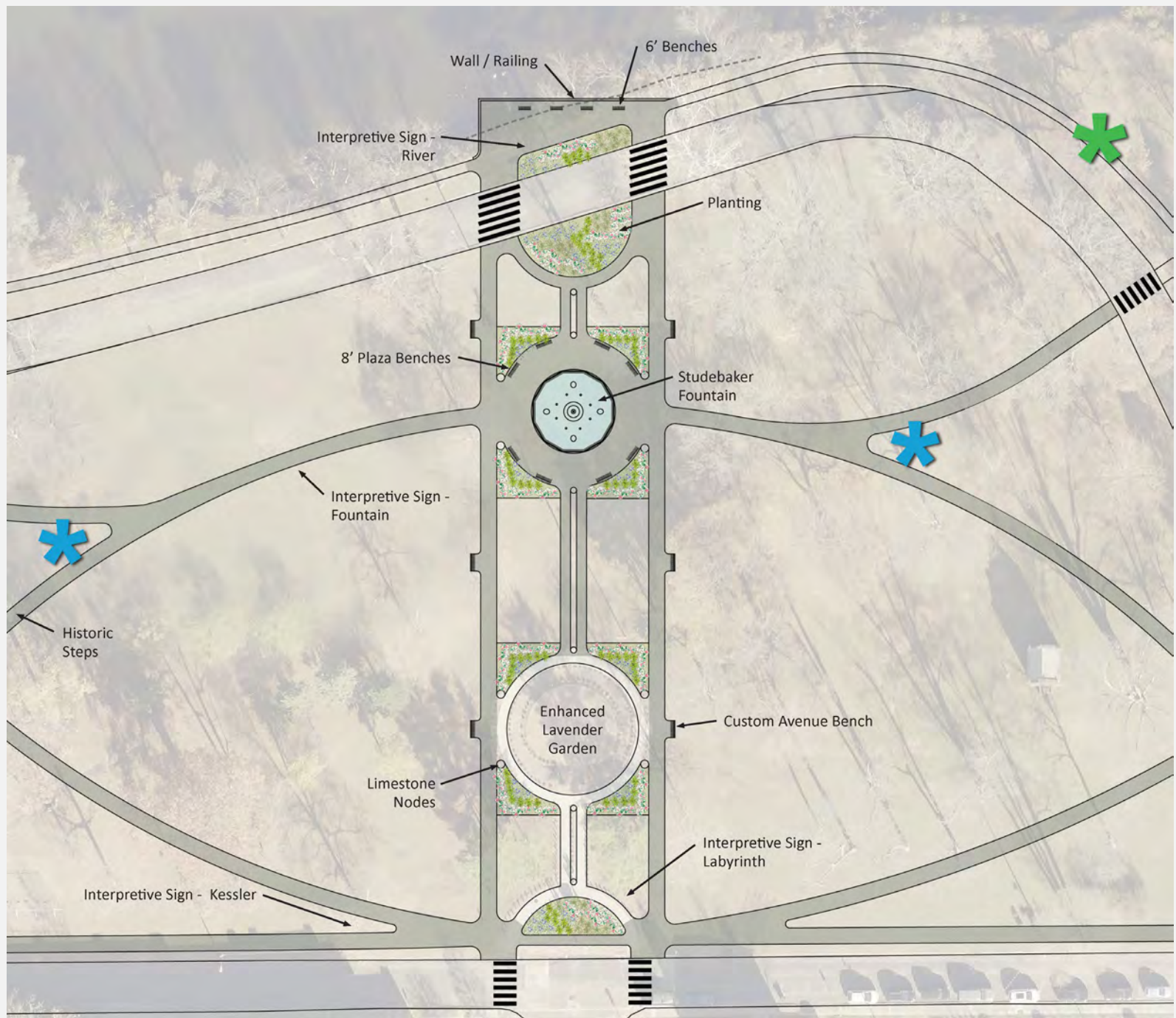


- Simple path network
- Formal avenue
- Studebaker Fountain
- Overlook at river



 Future Art Node
 Future River Seating Node

Central



Future Art Node



Future River Seating Node

Central



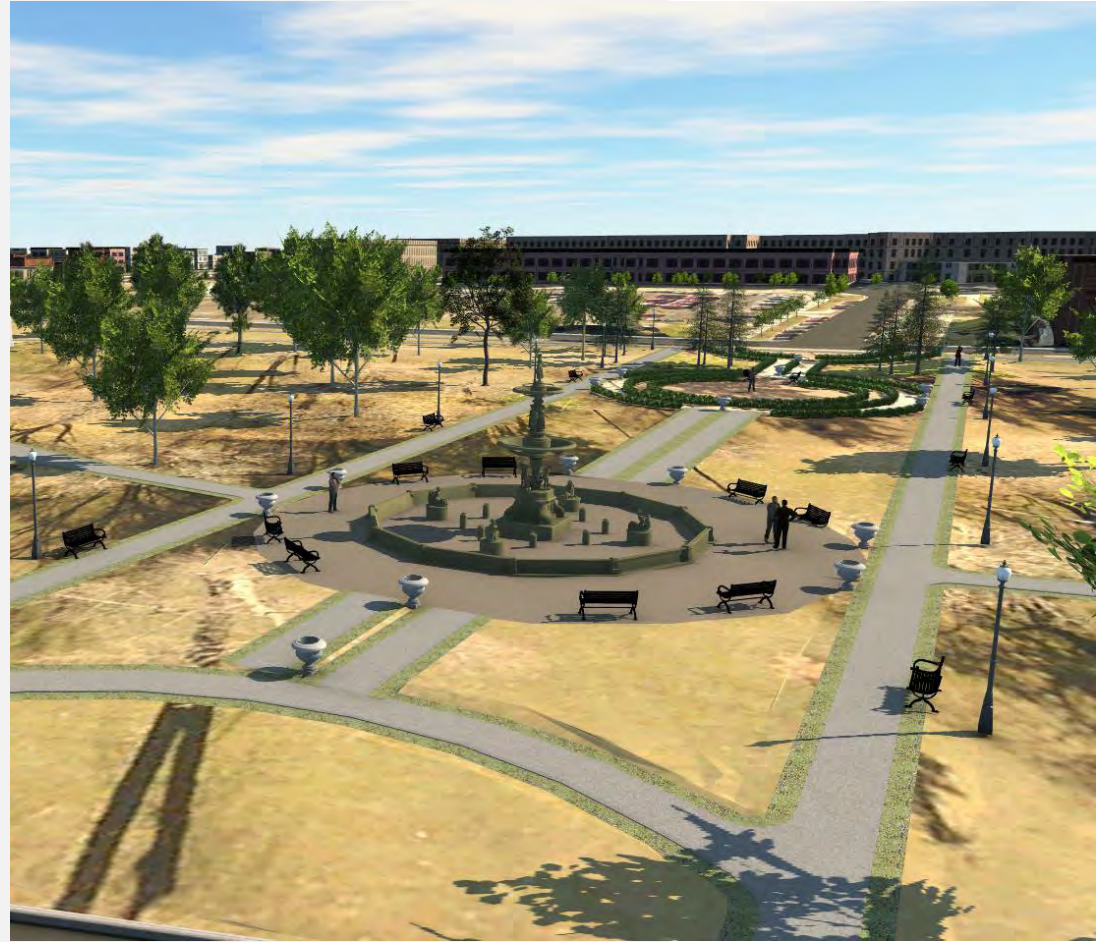
THE STUDEBAKER FOUNTAIN: HOWARD PARK



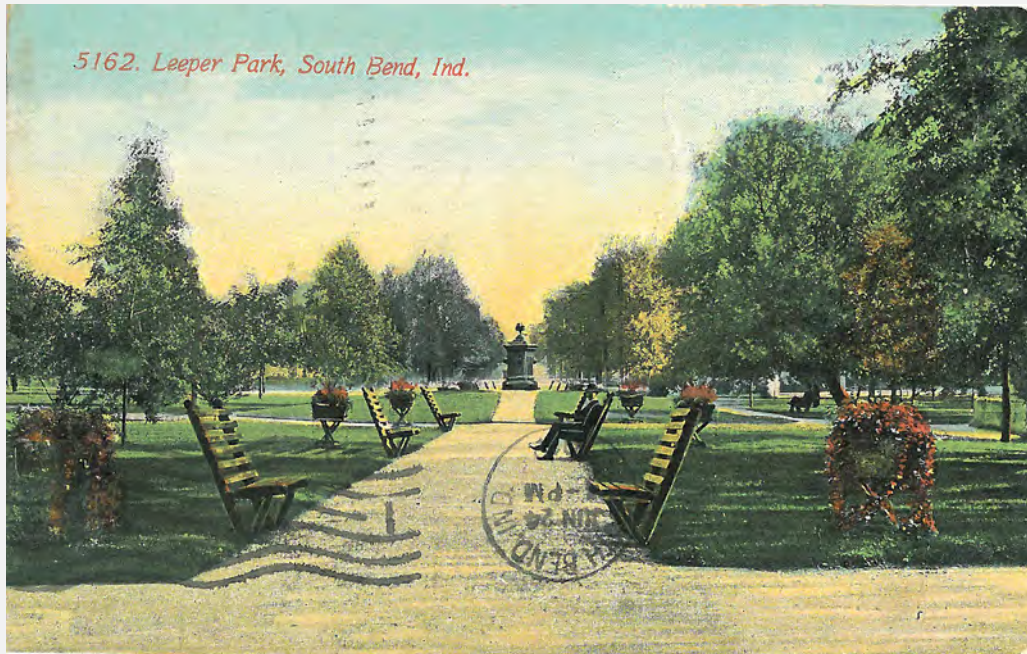
THE FOUNTAIN IN HOWARD PARK, SOUTH BEND, IND.

Fountain

LEEPER
PARK



Fountain



Ornament

TIMELINE & NEXT STEPS

- Phase 1 Design: Winter, 2018-2019
- Phase 1 Bidding: Spring, 2019
- Phase 1 Construction: Late Spring and Summer, 2019
- Tennis Court Upgrades: Summer, 2019 *
- Restroom Enhancements: Summer, 2019 *



THANK YOU

- Jonathan Mooney**  574.334.5487
Lochmueller Group  jmooney@lochgroup.com
- Kyle Silveus**  574.235.9083
City of South Bend  ksilveus@southbendin.gov
- Matthew Moyers**  574.235.7499
South Bend Venues Parks & Arts  mmoyers@southbendin.gov