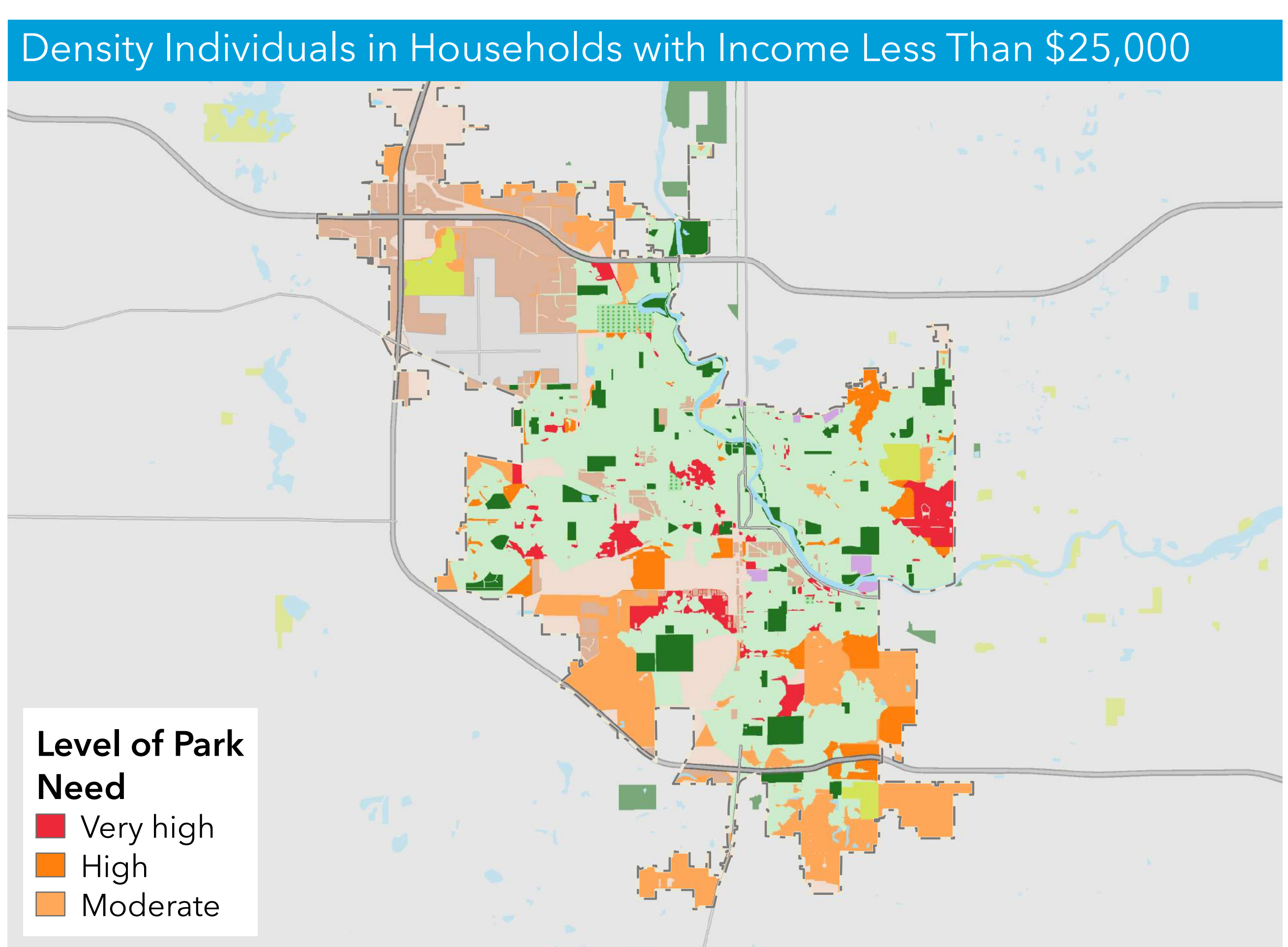
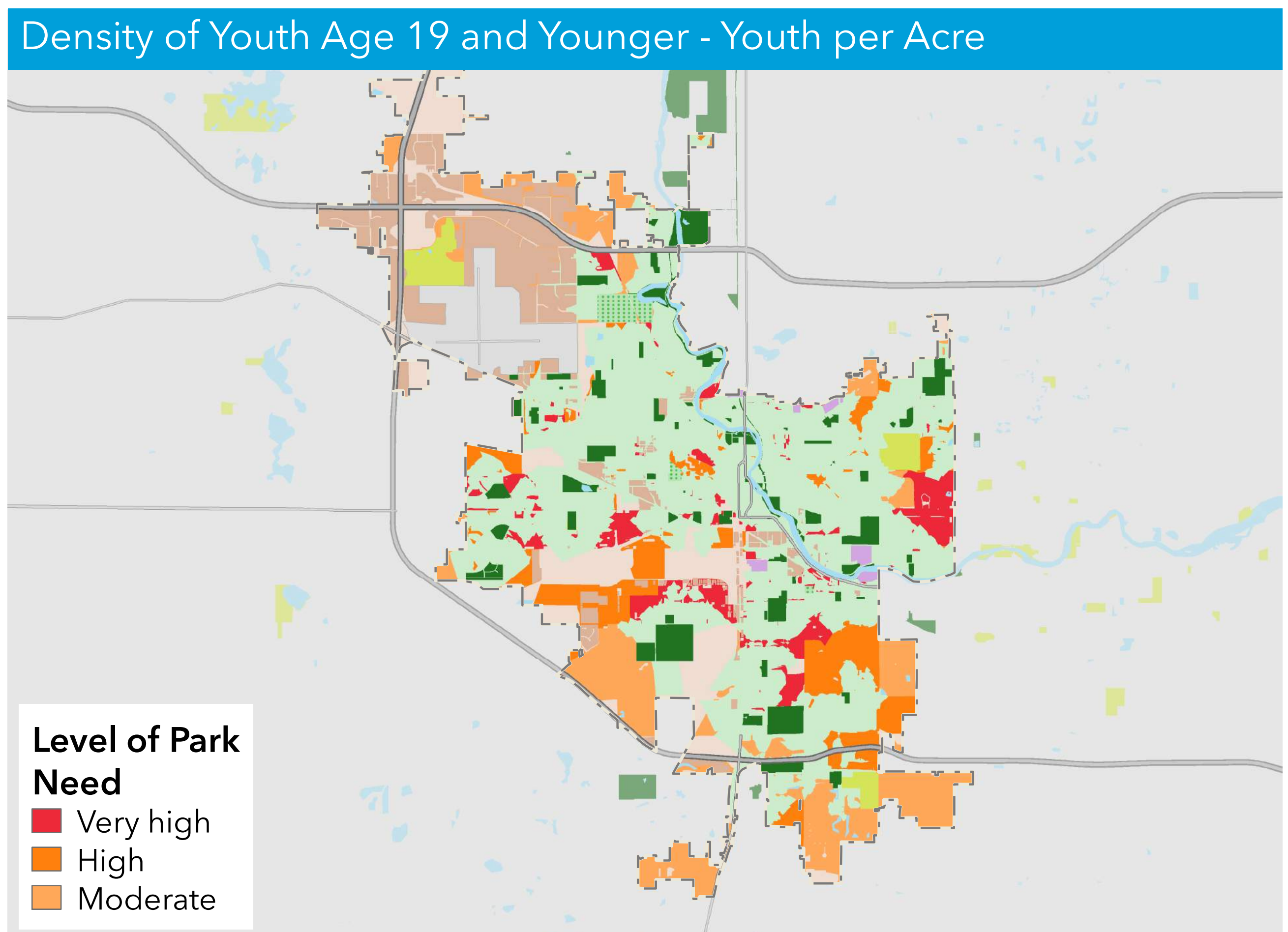
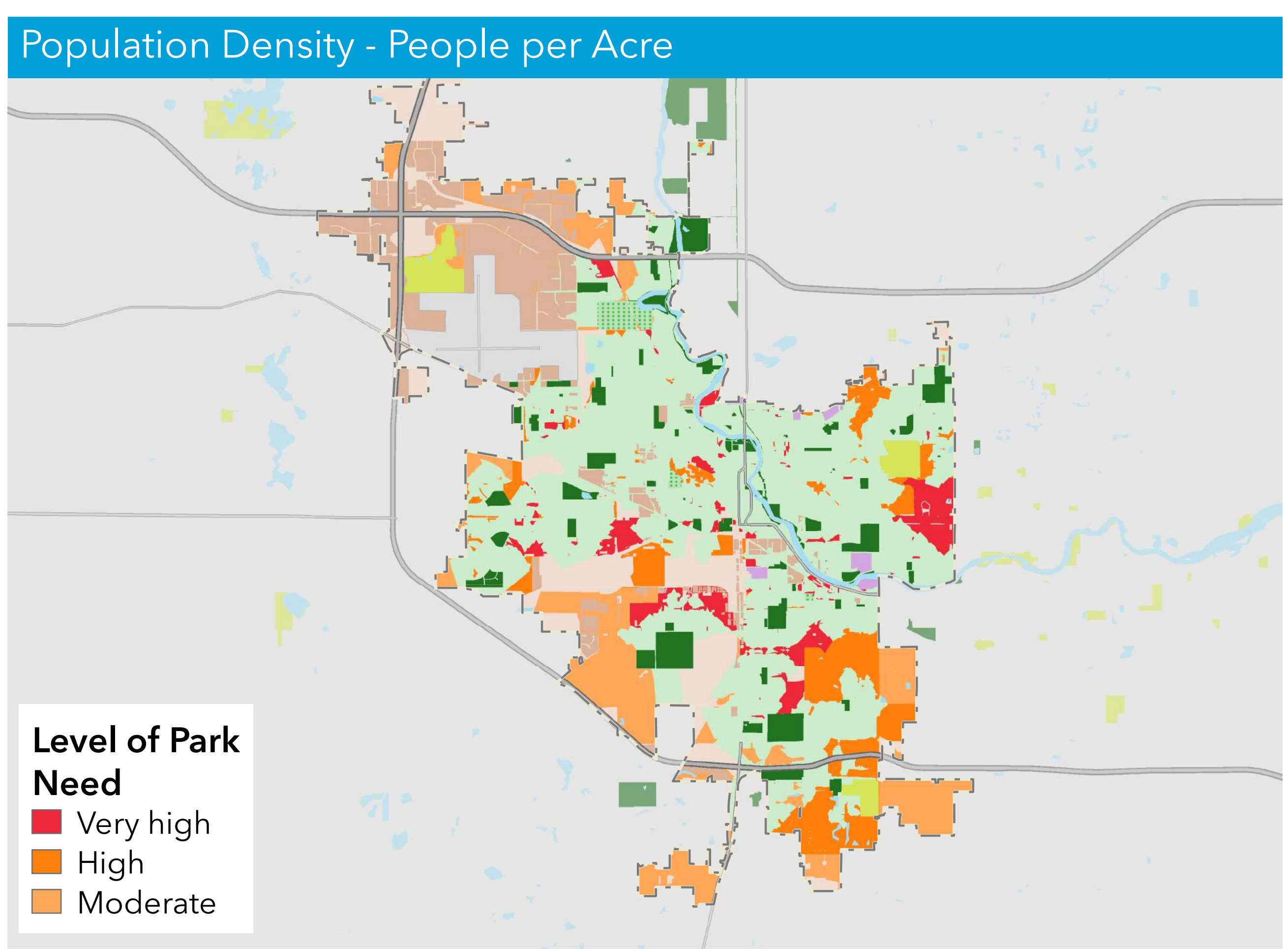


- Level of Park Need**
- Very high
 - High
 - Moderate
 - Parks with public access
 - Other parks and open space
 - Half-mile park service areas
 - Cemetery
 - University
 - Industrial
 - Vacant zero population areas
 - Waterbodies
 - County boundary



Special thanks to the following data providers: South Bend, Esri.
 Information on this map is provided for purposes of discussion and visualization only.
 Map created by The Trust for Public Land on February 13, 2017. The Trust for Public Land and The Trust for Public Land logo are federally registered marks of The Trust for Public Land.
 Copyright © 2017 The Trust for Public Land. www.tpl.org

The Trust for Public Land 2017 ParkScore® index

SOUTH BEND, INDIANA

The Trust for Public Land ParkScore® index analyzes public access to existing parks and open space. The analysis incorporates a two-step approach: 1) determines where there are gaps in park availability, and 2) constructs a demographic profile to identify gaps with the most urgent need for parkland. Park gaps are based on a dynamic 1/2 mile service area (10 minute walking distance) for all parks. In this analysis, service areas use the street network to determine walkable distance - streets such as highways, freeways, and interstates are considered barriers.

Demographic profiles are based on 2016 Forecast block groups provided by Esri to determine park need for density of youth, density of individuals in

households with income less than 75% of city median income (South Bend less than \$25,000), and population density (people per acre).

The combined level of park need result shown on the large map combines the three demographic profile results and assigns the following weights:

- 50% = population density (people per acre)
- 25% = density of youth age 19 and younger
- 25% = density of individuals in households with income less than \$25,000

Areas in dark red show a very high need for parks.