

KENNEDY PARK IMPROVEMENTS

COMMUNITY MEETING

AQUATICS | ATHLETICS | DESIGN | AMENITIES

PROJECT APPROACH

- City initial input via Neighborhood Plan and other outreach sessions
- Development of a **Master Plan** for the park
- Selection of scope of improvements for **Phase I project** (based on available budget and potential for grants)
- Finalization of funding sources
- Further development of Phase I design and project specifics



Kennedy Park



WHAT A SITE MASTER PLAN IS

- Reflects conceptual needs and desires for the site, including but not limited to:
 - Desired program of space/activities
 - Types and sizes of buildings, site amenities such as sports fields, picnic areas, and playgrounds
 - Natural areas to be protected
 - Pedestrian and vehicular circulation
 - Appropriate orientations and adjacencies between these elements.
- Provides a structured approach, clear framework and planning level cost

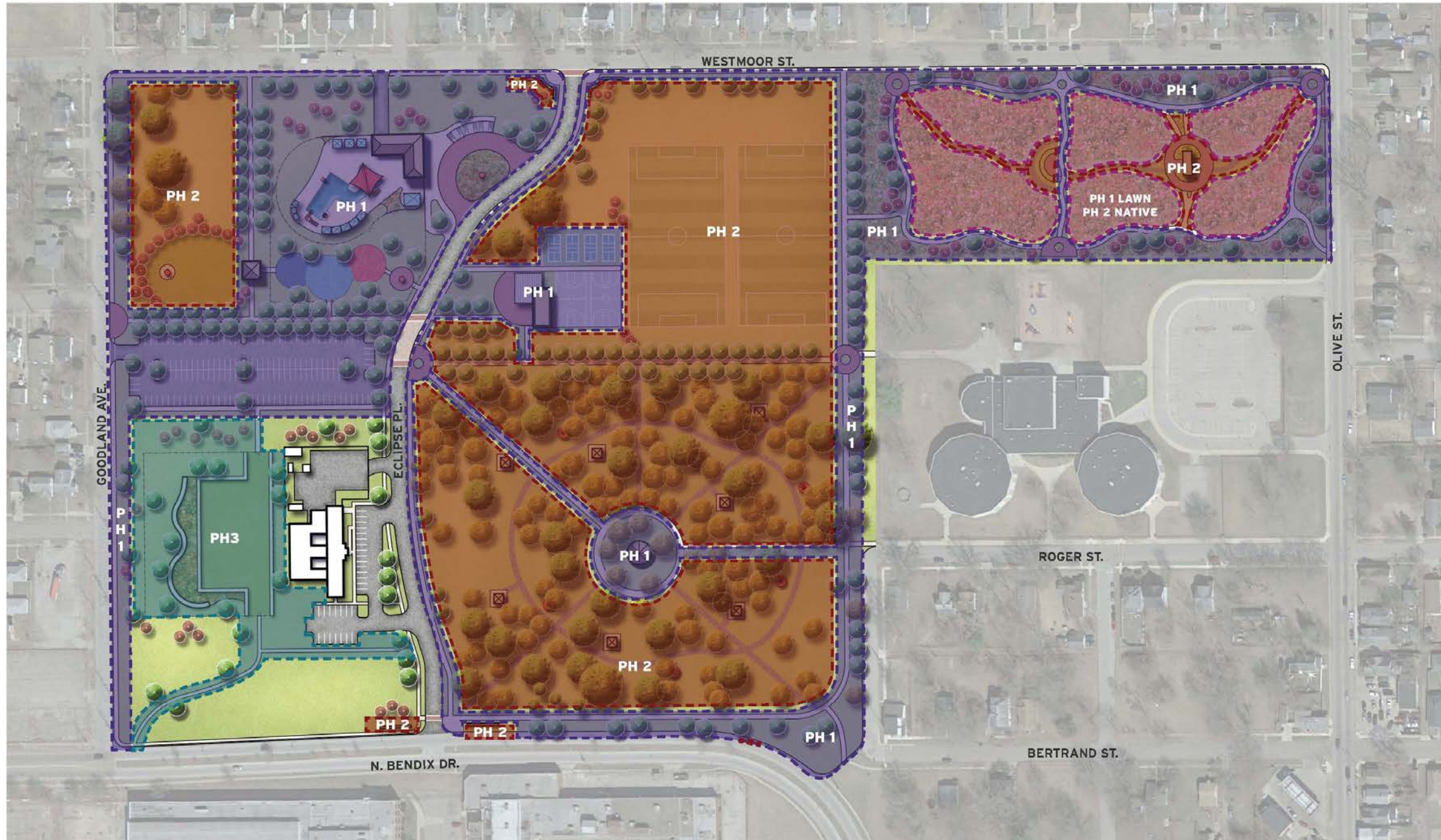
KENNEDY PARK EXISTING CONDITIONS



KENNEDY PARK OVERALL MASTER PLAN



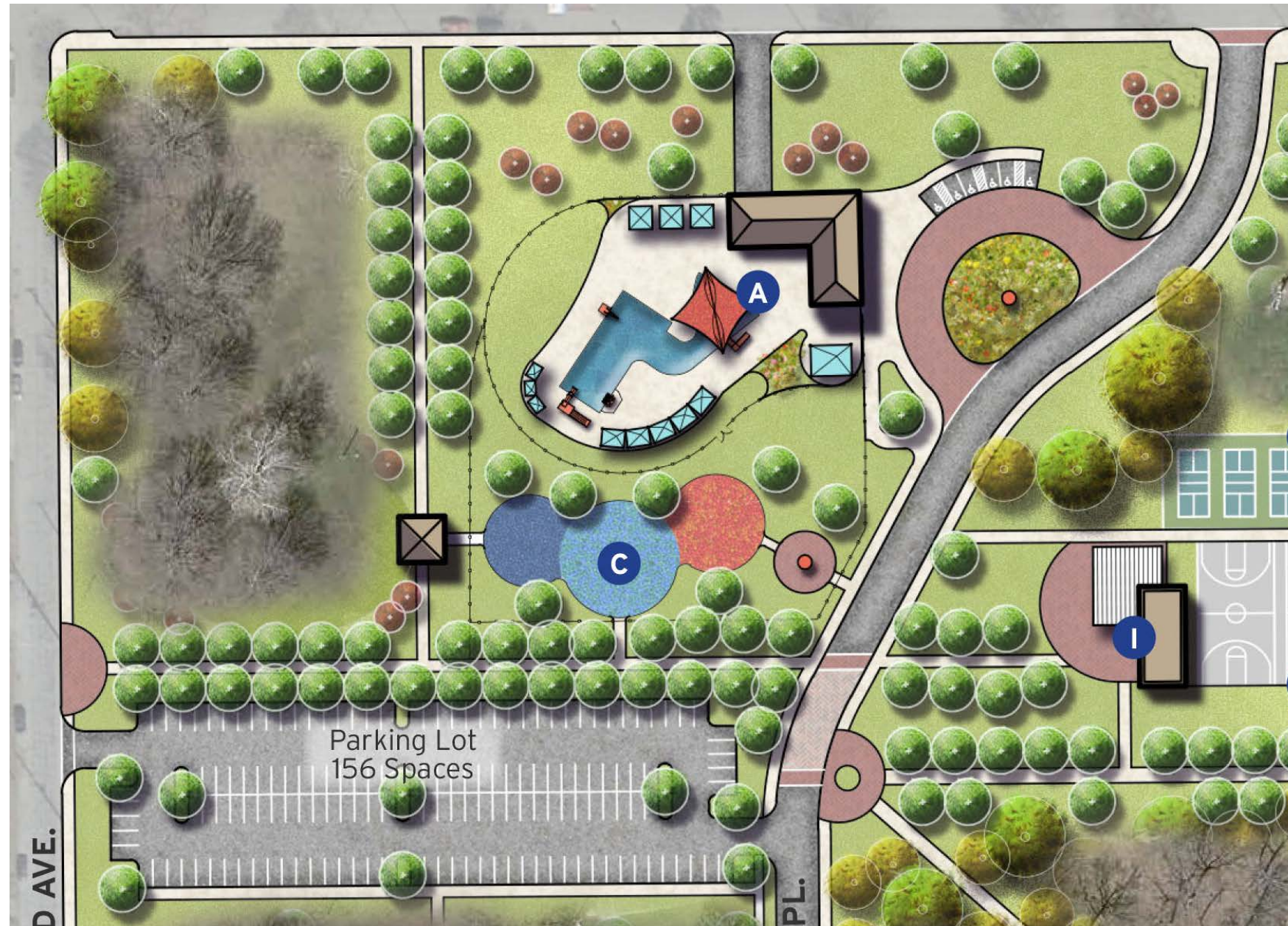
KENNEDY PARK PHASING PLAN



KENNEDY PARK PHASE I PLAN



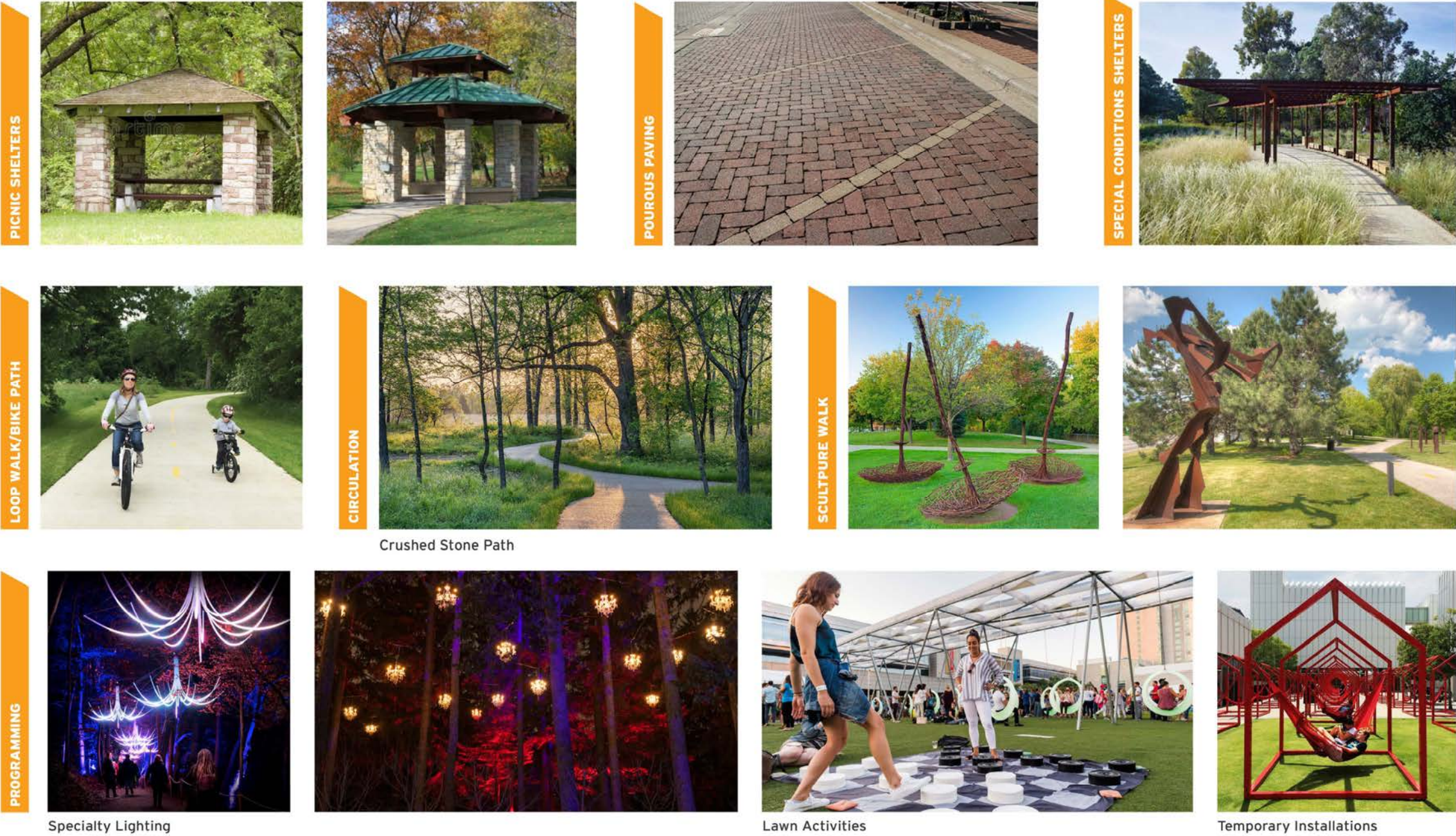
PHASE I: POOL ARRIVAL, PLAYGROUND, PARKING



PHASE I: OAK GROVE PICNIC AREA



PHASE I: VARIOUS SITE ELEMENTS



PHASE I: BUILDING RENOVATION & SPORTS COURTS



PHASE I: BUILDING RENOVATION & SPORTS COURTS



PICKLEBALL COURTS



PLAZA GATHERING SPACE



BASKETBALL COURTS



PHASE I: NATIVE HABITAT

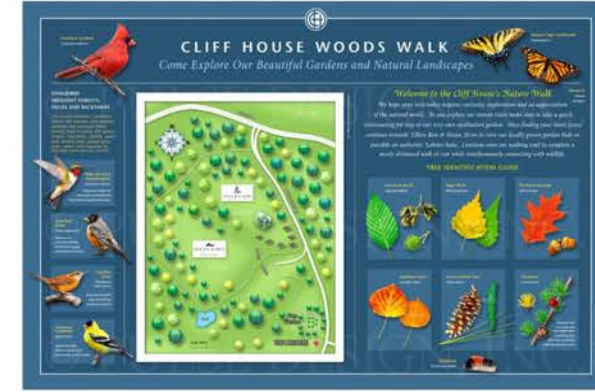


PHASE I: NATIVE HABITAT

NATIVE PRAIRIE GRASS



EDUCATIONAL SIGNAGE



OUTDOOR CLASSROOM



POLLINATOR GARDENS



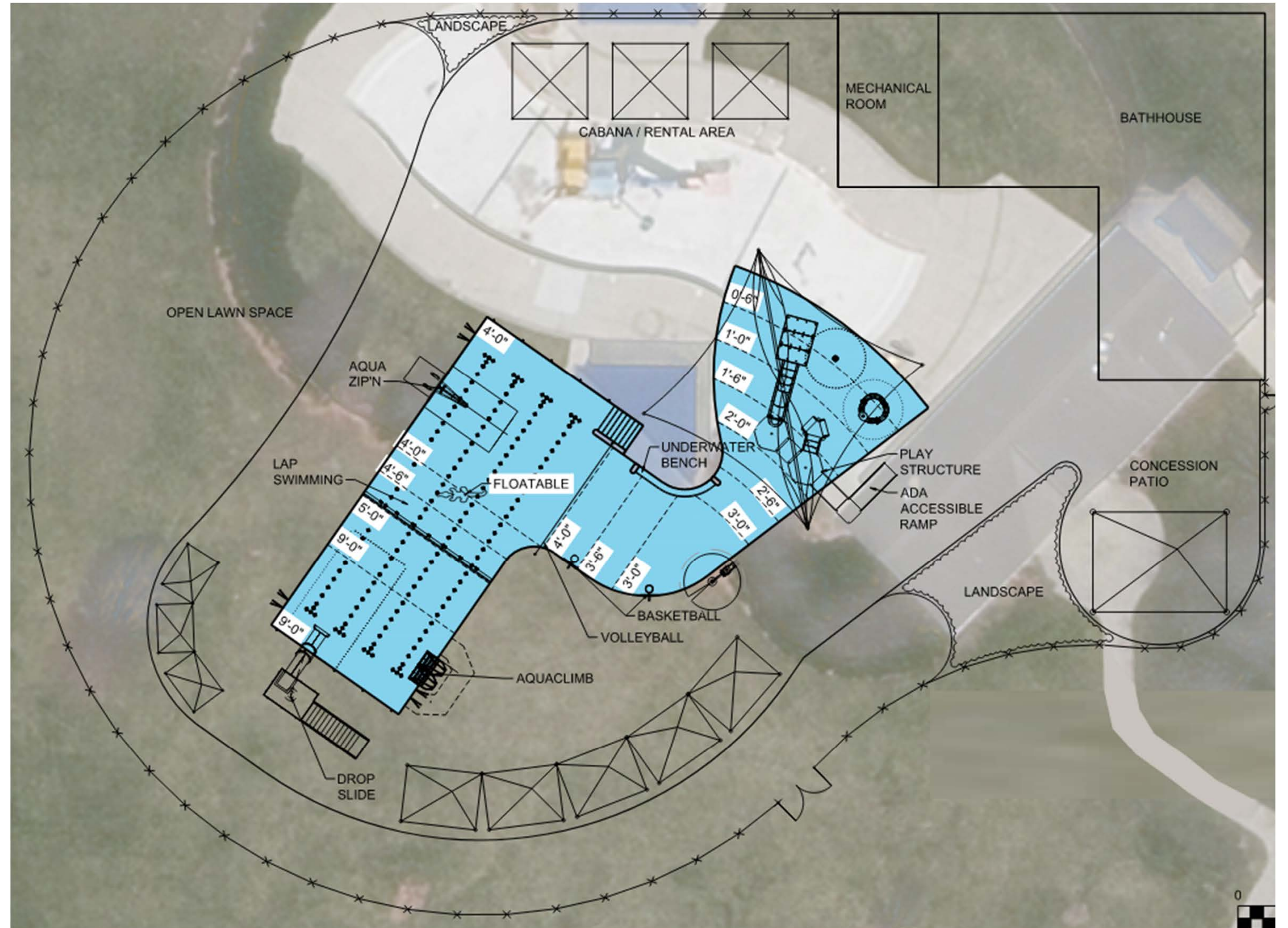
ENVIRONMENTAL CENTER



GATEWAYS



PHASE I: AQUATICS FACILITY



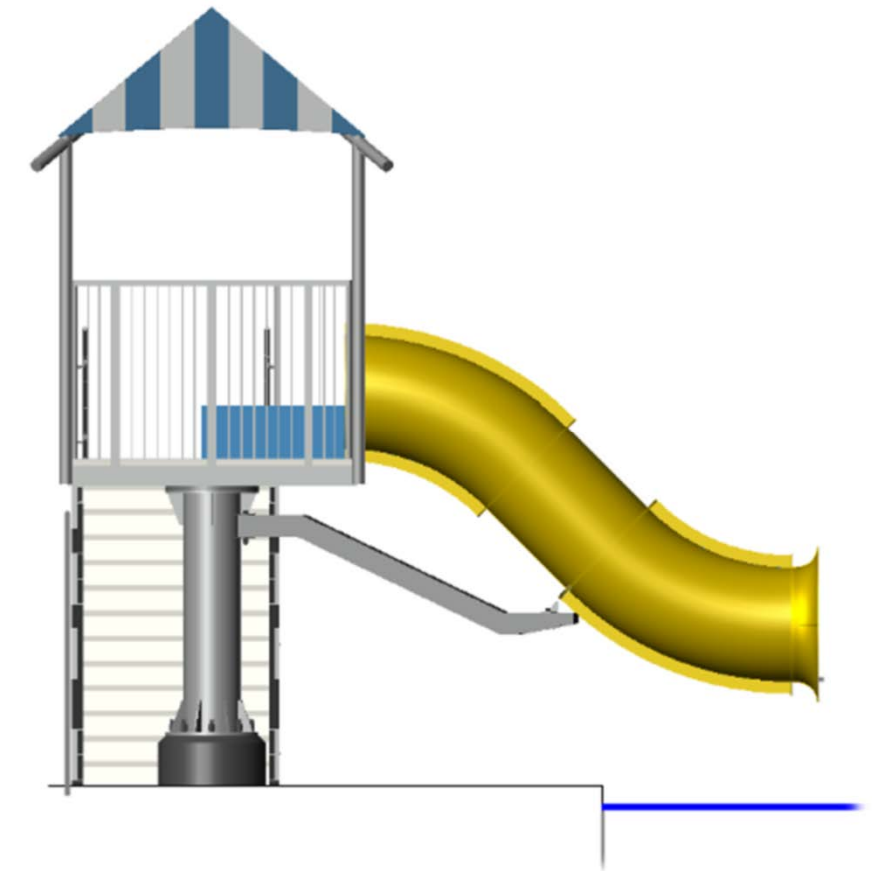
PHASE I: AQUATICS FACILITY



PHASE I: AQUATICS FACILITY



PHASE I: AQUATICS FACILITY



PHASE I: AQUATICS FACILITY



PHASE I: AQUATICS FACILITY



HOW YOU HELP

We need your feedback!

- 3 breakout stations set up
- Targeted towards these areas:
 - Aquatics Facility and Building
 - Park and physical structures
 - Partnerships, programming, and recreation opportunities



IDEAS FOR FEEDBACK

- Provide comments on the plan
 - What do you or don't you like about major scope items within the plan?
 - How do you feel about the relationship of the amenities to the adjacent neighborhood and school?
 - Does this reflect previous public input?
 - What are your concerns about this park now or the proposed improvements?



IDEAS FOR FEEDBACK

- Brainstorm Programming ideas
 - How do you use other city parks?
 - How could/would you use this space?
 - Are you a part of a community group? How could this benefit that group?
- Consider Access
 - Does this park provide opportunities others in the City don't?
 - Do you see any barriers to use?